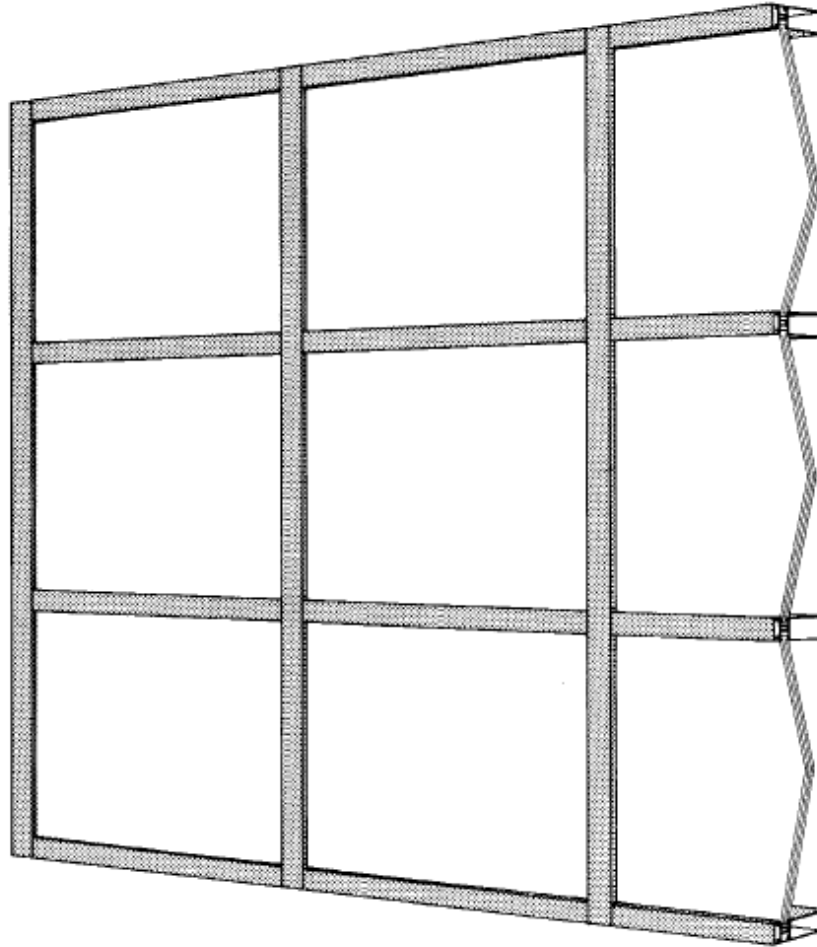




400 Series Curtainwall  
Job Name: South Shore Plaza  
Location: Braintree, MA  
Glazing Contractor: Glass Installations, Inc., Dorchester, MA  
Architect: Walker Consultants

**21.01**  
**400 Series Curtainwall**  
**Description**



# 21.02

## 400 Series Curtainwall

### Guide Specifications

#### General

##### Description

Furnish all necessary materials, labor and equipment for the complete installation of aluminum curtainwall framing as shown on the drawings and specified herein.

Curtainwall framing shall be 400 Series Curtainwall as manufactured by Tubelite Inc., Walker, Michigan. Whenever substitute products are to be considered, supporting technical literature, samples drawings and performance data must be submitted ten (10) days prior to bid in order to make a valid comparison of the products involved.

Test reports certified by an independent laboratory will be submitted upon request.

##### Performance Requirements

Air infiltration shall not exceed 0.06 CFM/Ft<sup>2</sup> when tested in accordance with ASTM E-283 "Rate of Air Leakage Through Exterior Windows" at a test pressure of 6.24 PSF.

There shall be no uncontrolled water entry when tested in accordance with ASTM E-331 "Water Penetration of Exterior Windows, Curtainwalls and Doors by Uniform Static Air Pressure Difference" at a test pressure of 15 PSF.

There shall be no uncontrolled water entry when tested in accordance with AAMA 501.1-83 "Standard Test Method for Metal Curtainwalls Using Dynamic Pressure" at a dynamic pressure equivalent of 15 PSF.

There shall be no buckling, stress on glass, edge seal failure, excess stress on curtainwall structure, anchors and fasteners or reduction in performance when tested in accordance with AAMA 501.5-98 at a temperature range of 0° to 180° F.

There shall be no "Life/Safety" type failures (glass breakage, anchor failures, or structural damage) when tested in accordance with AAMA 501.4, seismic test (lateral cycling.)

Structural performance shall be based on a maximum allowable deflection of L/175 of the span or 3/4" maximum. The system shall perform to this criteria when subjected to a wind load of (architect specify) \_\_\_\_\_ PSF.

—Thermal transmittance due to conduction ( $U_c$ ) shall not be greater than 0.66 BTU/Hr/Ft<sup>2</sup>/F° when tested in accordance with AAMA 1503.1-98, and the Condensation Resistance Factor of the framing (CRF) shall not be less than 68 when tested in accordance with AAMA 1503.1-98.

The system shall have a Sound Transmission Class (STC) rating of 32 and an Outdoor-Indoor Transmission Class (OITC) rating of 26 when tested in accordance with ASTM E90-97, ASTM E413-87 (reapproved 1994) and ASTM E1332-90.

#### Products

##### Materials

Extrusions shall be of aluminum alloy 6063-T5 or 6063-T6 (as required), manufactured within commercial tolerances and free from defects impairing strength and/or durability.

Screws, bolts and all other accessories to be compatible with the aluminum under normal service conditions.

Thermal barrier shall be by means of a flexible 55-60 durometer EPDM isolator located at the exterior side of the glass plane preventing continuous contact between exterior and interior metal.

##### Finish

All exposed framing surfaces shall be free of scratches and other serious blemishes.

Finish to be: (architect select)

Etched and clear anodized  
(AA M12C22A31)

Class 2 Clear (OA)  
(AA M12C22A41)

Class 1 Clear (2A)  
Electrolytically deposited color  
(AA M12C22A44),

Champagne (4K),  
Light Amber (2K),  
Amber (1K),  
Statuary Bronze (3K),  
Black (OD), or

Fluoropolymer painted color \_\_\_\_\_.

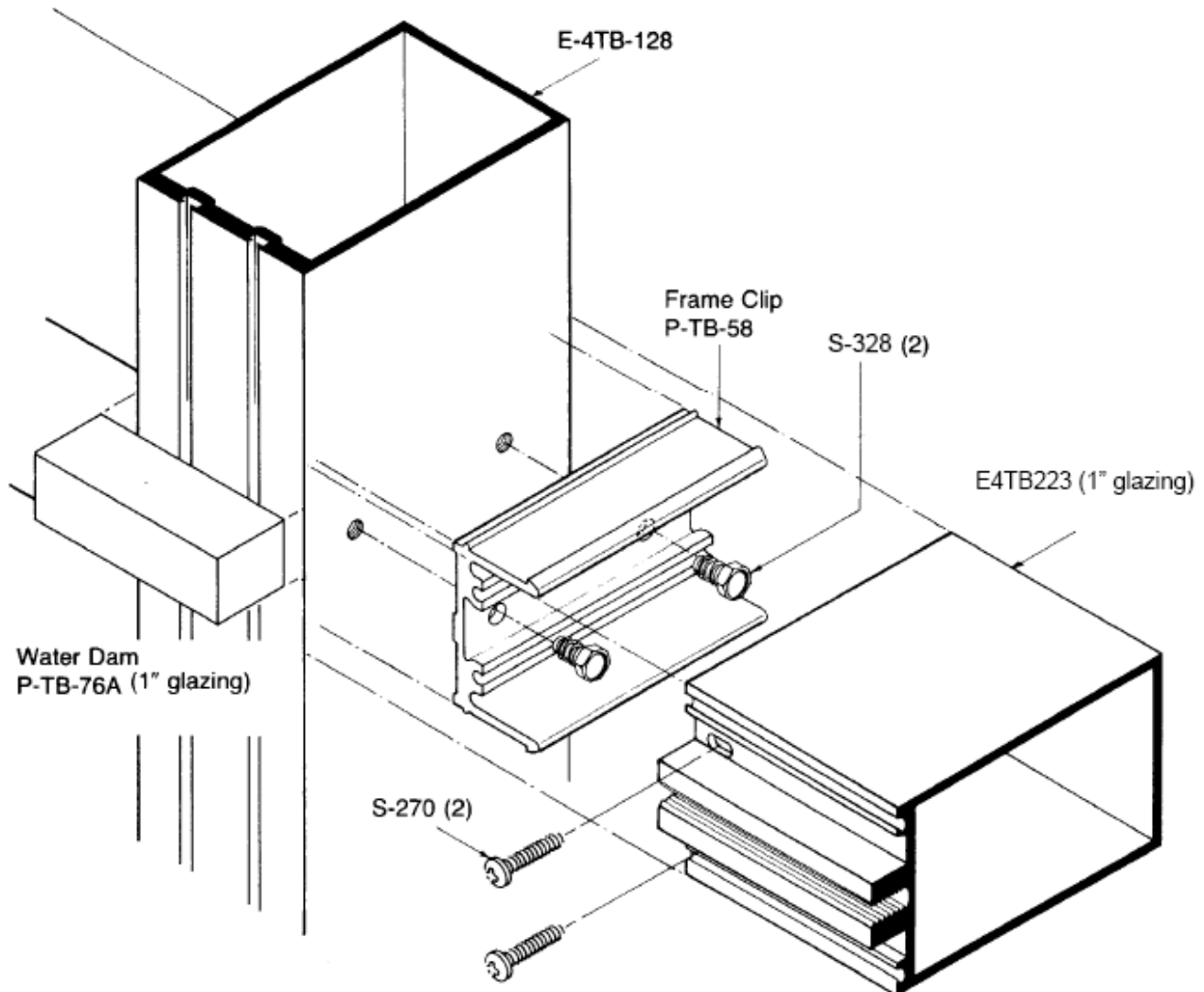
#### Execution

##### Installation

Shall be in accordance with the manufacturer's installation instructions and the approved shop drawings.

specifications are subject to change

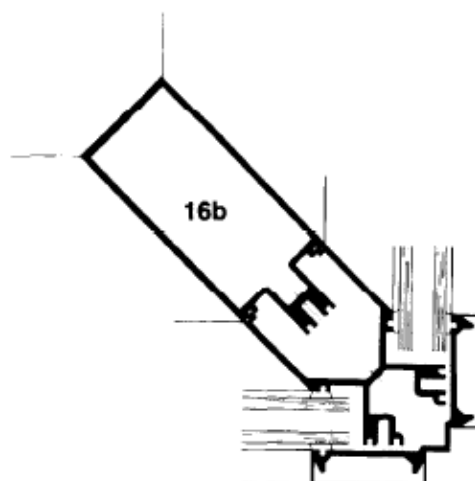
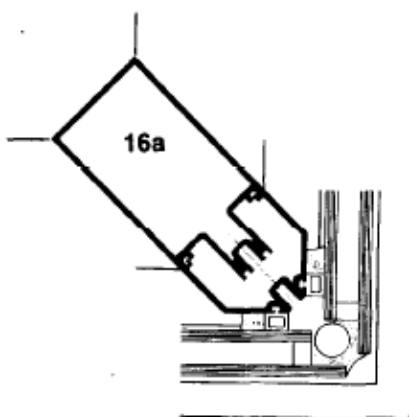
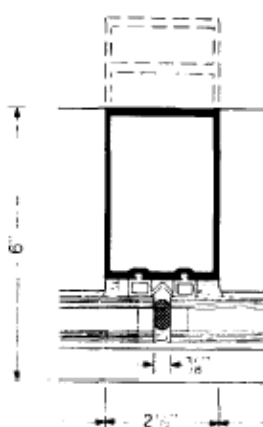
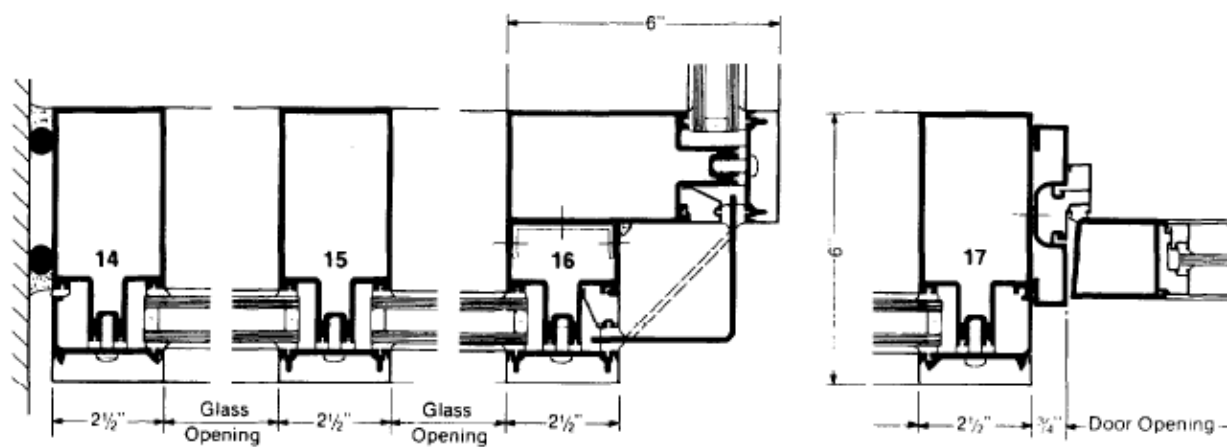
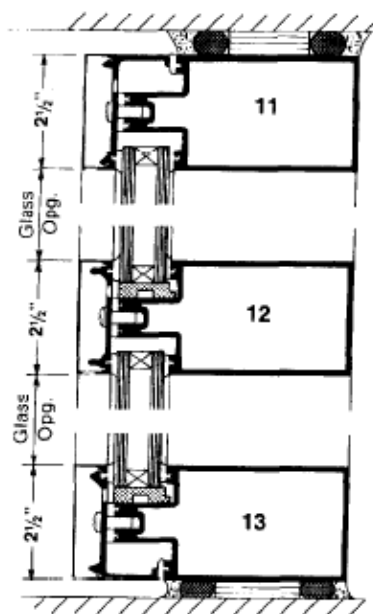
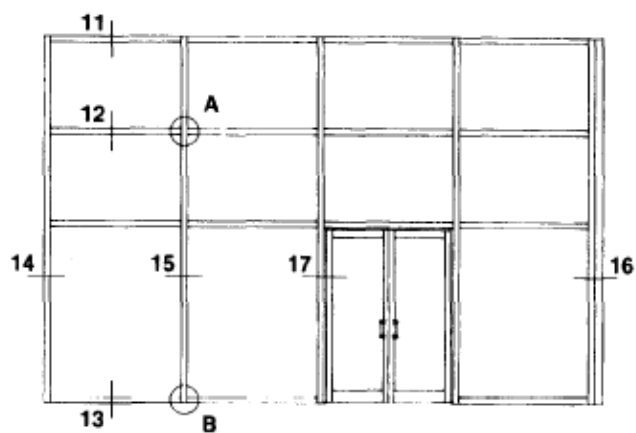
**21.03**  
**400 Series Curtainwall**  
**Silicone Glazed Vertical - Isometric**



June/2003

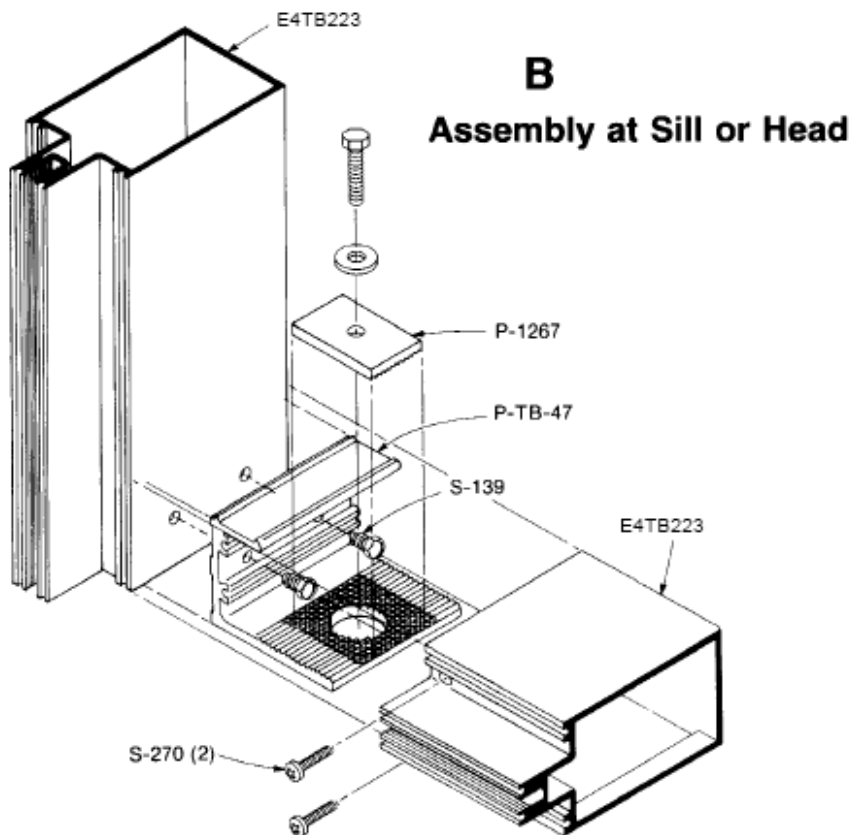
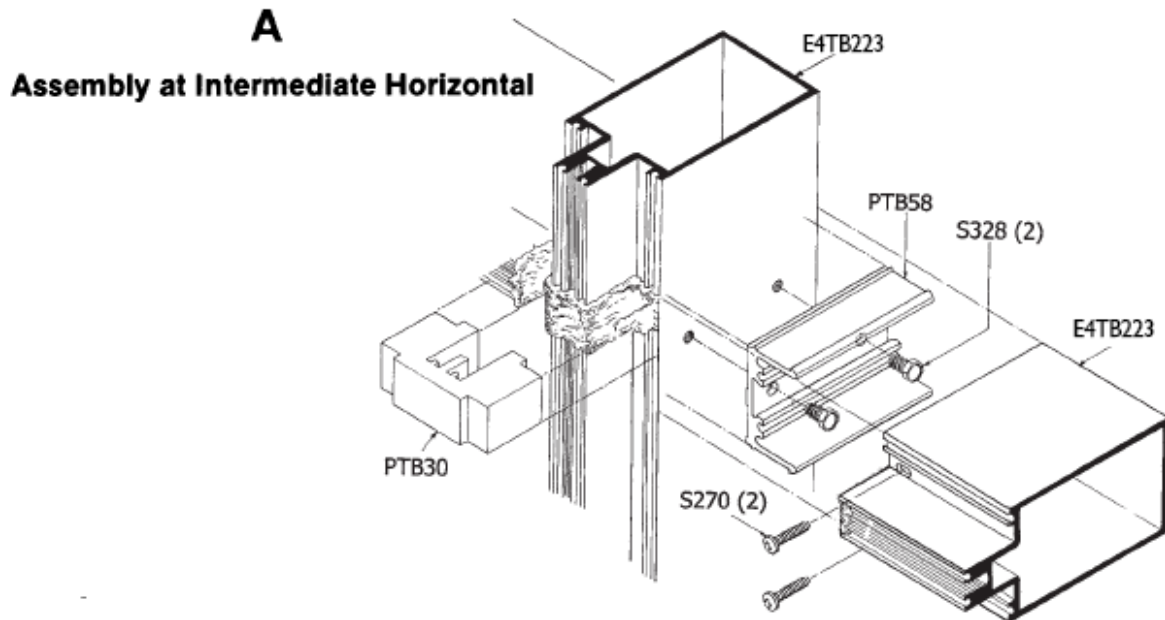
**TUBELITE**  
STOREFRONTS & ENTRANCES  
DEPENDABLE

# **21.04** **400 Series Curtainwall** **Key Elevation & 1/4 Size Details** **1" Infill**





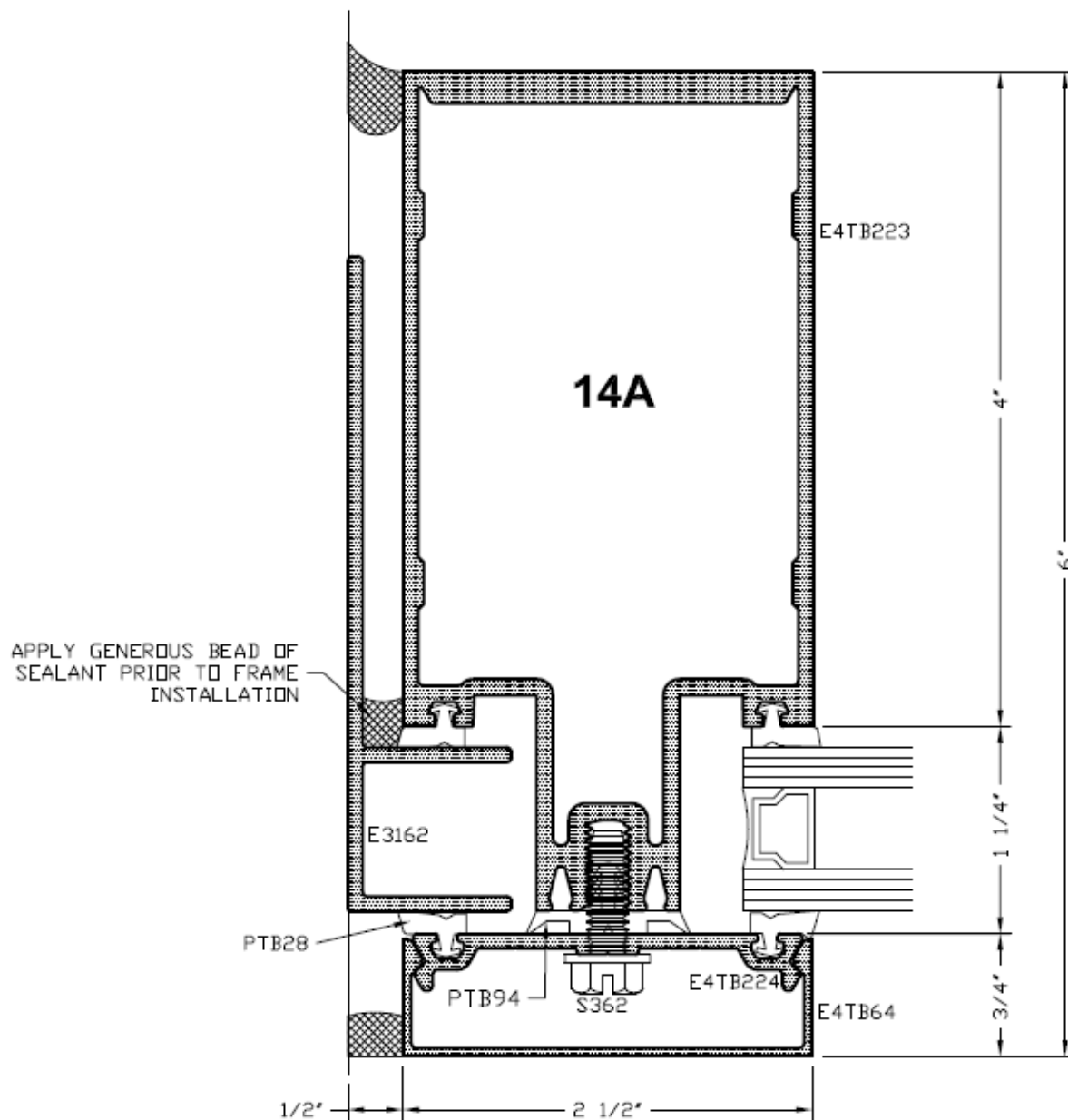
21.05  
**400 Series Curtainwall**  
Clip Installation - Isometric



## 400 Series Curtainwall

### Tubular Jamb With "F" Jamb Anchor

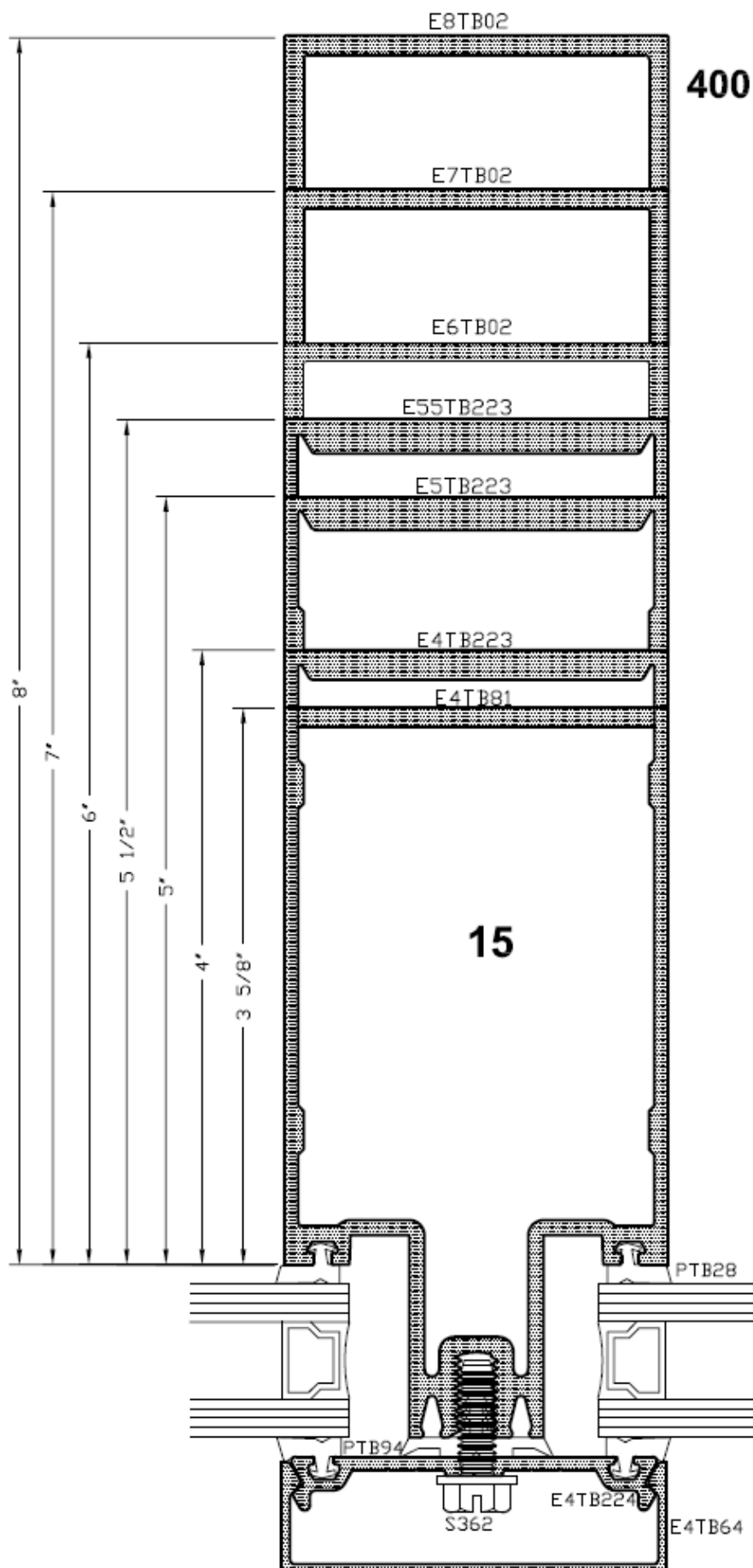
CAD DETAIL FILE NO.  
290JAMB4



**TUBELITE®**  
STOREFRONT, CURTAINWALL & ENTRANCES  
REPRESENTATIVE

2006

\*SEALANT, ROD, & ANCHORS NOT BY TUBELITE



## 21.11 400 Series Curtainwall Intermediate Verticals

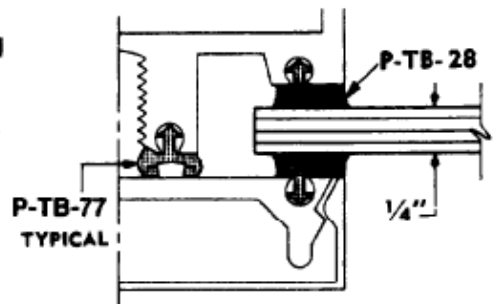
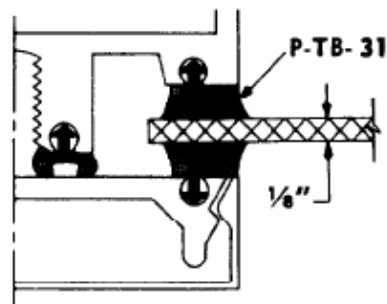
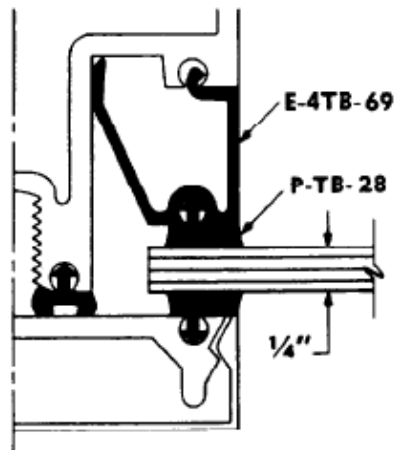
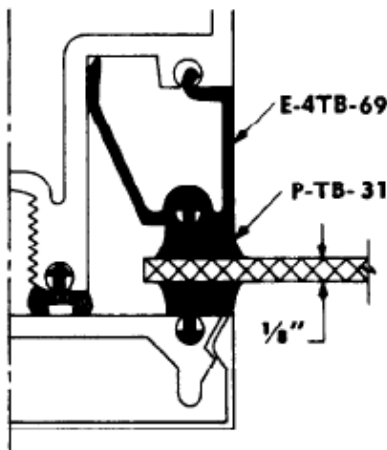
CAD DETAIL FILE NO.  
290VERT10



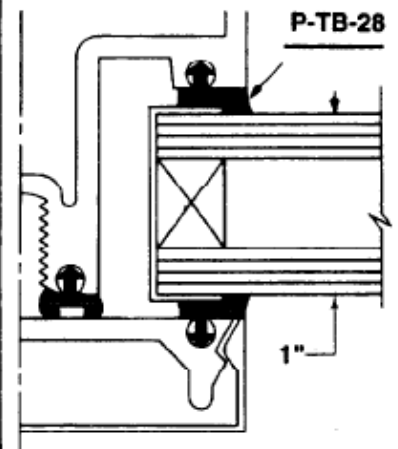
# 21.23

## 400 Series Curtainwall

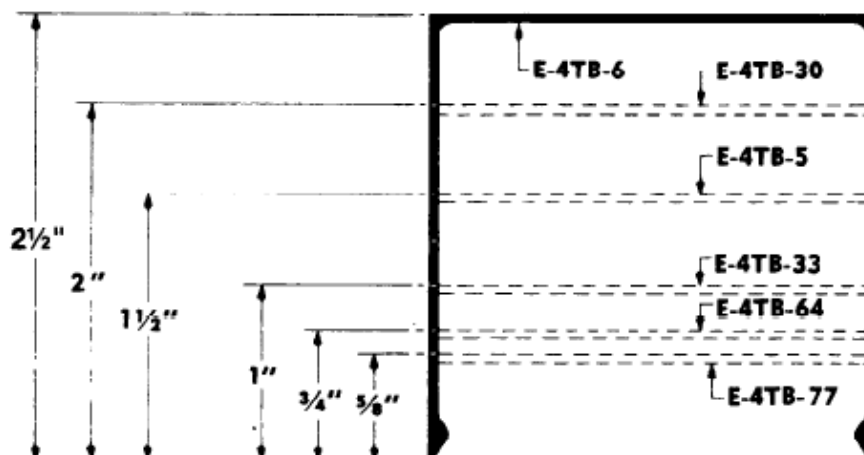
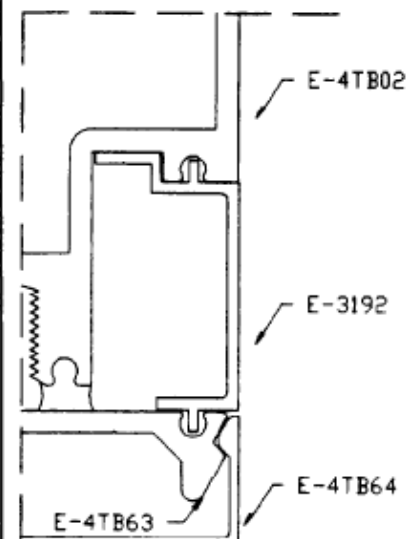
### Glass Pocket Reducers & Pressure Plate Covers



#### DOUBLE GLAZED SYSTEM



#### GLAZING POCKET FILLER



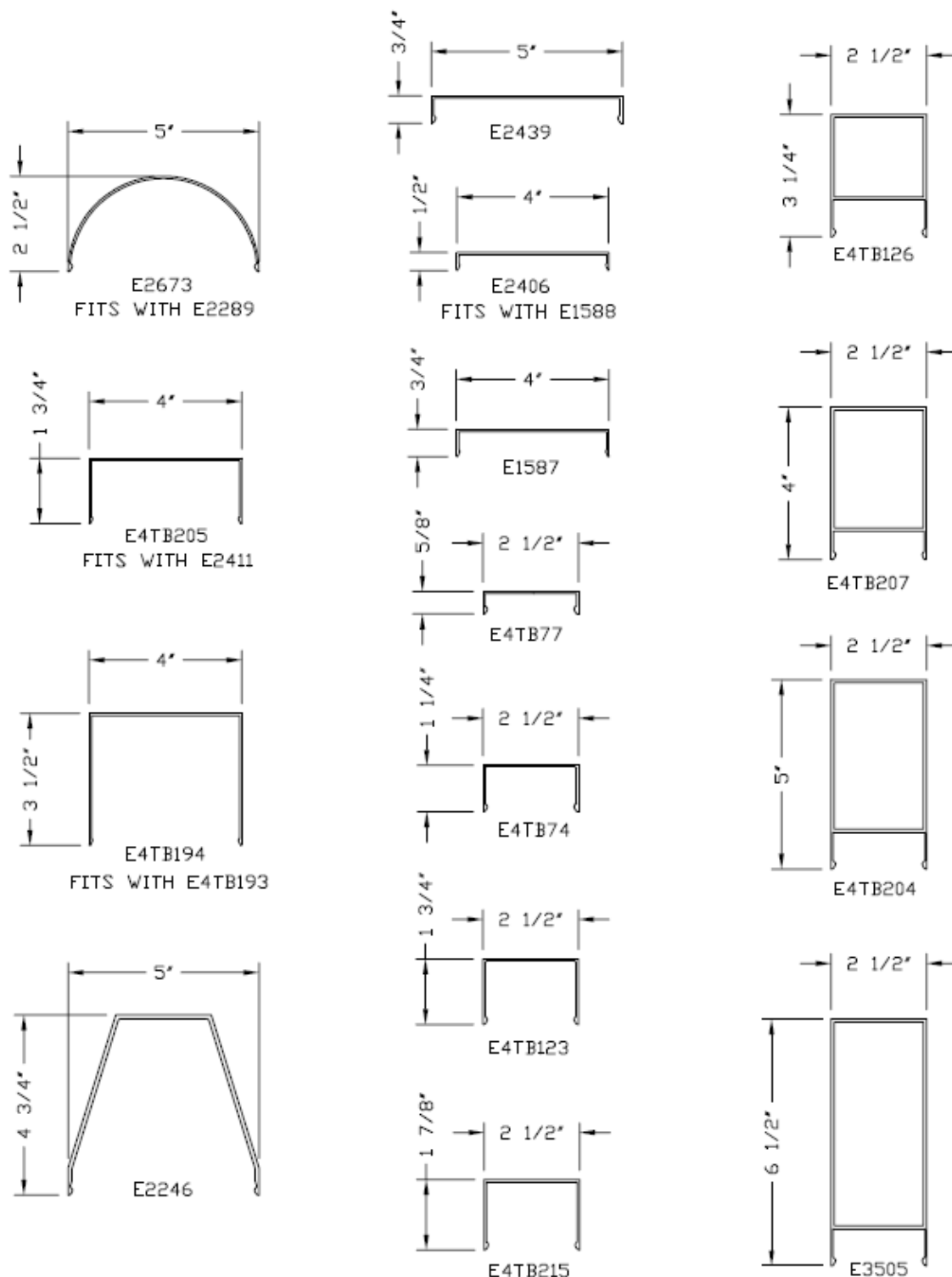
#### PRESSURE PLATE COVERS

## 21.32

### 400 Series Curtainwall

#### Miscellaneous Snap Covers - 1/4 Scale

CAD DETAIL FILE NO.  
290MISC



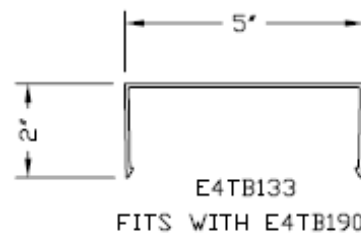
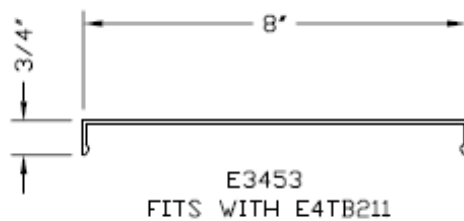
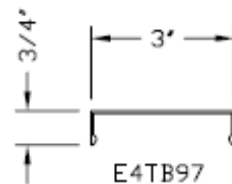
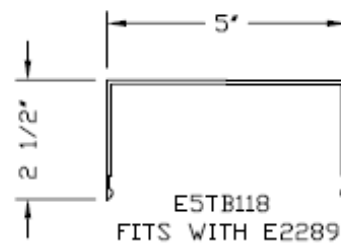
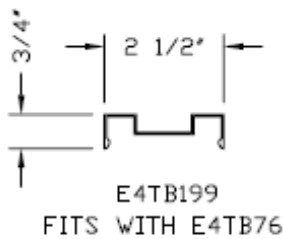
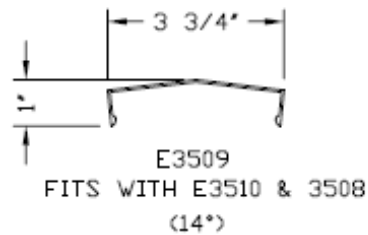
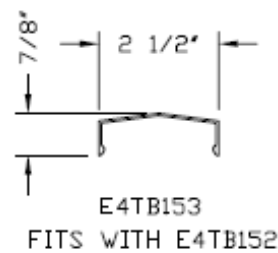
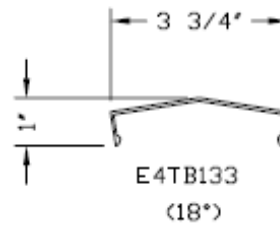
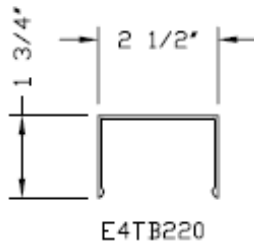
**TUBELITE®**  
STOREFRONT, CURTAINWALL & ENTRANCES  
DEPENDABLE

# 21.33

## 400 Series Curtainwall

### Miscellaneous Snap Covers - 1/4 Scale

CAD DETAIL FILE NO.  
290MISC1



21.34

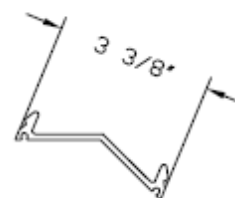
## 400 Series Curtainwall

### Miscellaneous Pressure Plates - 1/4 Scale

CAD DETAIL FILE NO.  
290MISC2



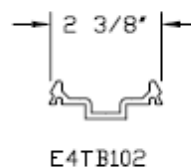
E4TB164



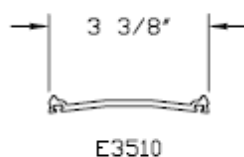
E4TB153  
FITS WITH E4TB160



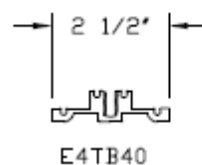
E4TB96



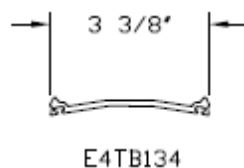
E4TB102



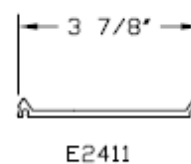
E3510  
FITS WITH E3508 & E3509



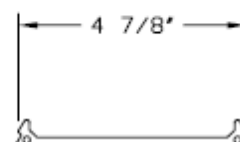
E4TB40



E4TB134



E2411

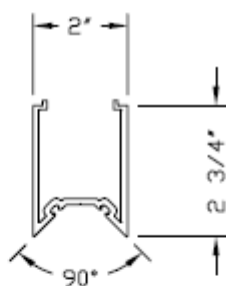


E2289  
FITS WITH E2290 & E2288

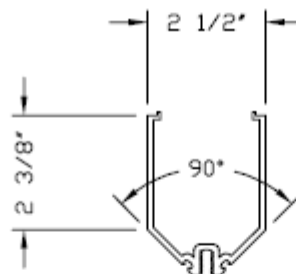
**21.35**

**400 Series Curtainwall**  
**Miscellaneous Adapters - 1/4 Scale**

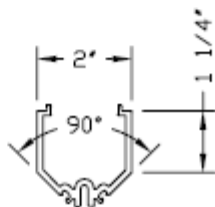
CAD DETAIL FILE NO.  
290MISC3



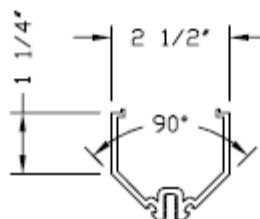
E2100



E4TB200



E2101



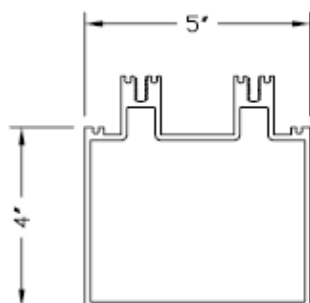
E4TB172

# 21.36

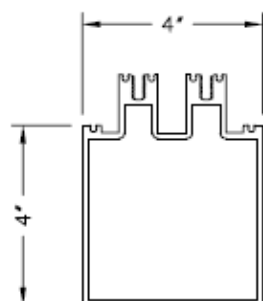
## 400 Series Curtainwall

### Miscellaneous Backmembers - 1/4 Scale

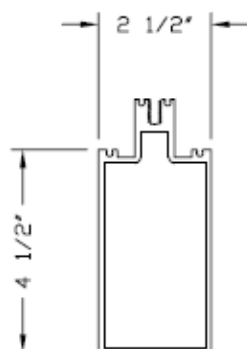
CAD DETAIL FILE NO.  
290MISC4



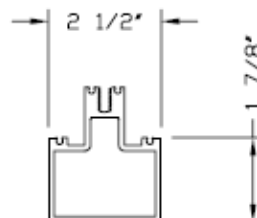
E2288  
FITS WITH E2289



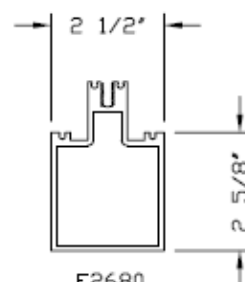
E4TB179  
FITS WITH E2411, E1587, & E2406



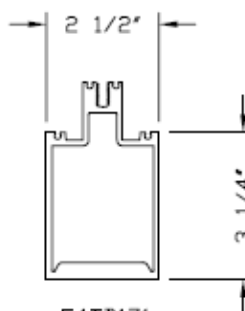
E45TB02  
FITS WITH E2289



E4TB216



E2680



E4TB171

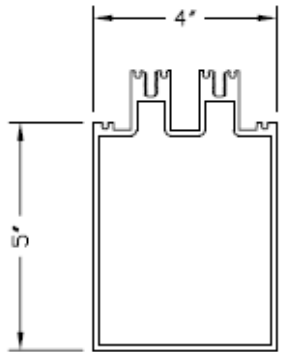


**21.37**

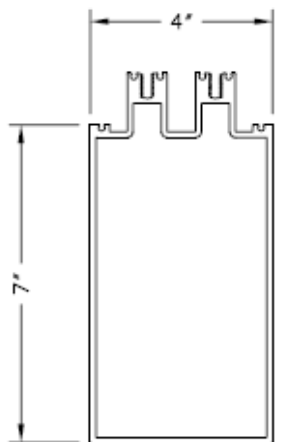
**400 Series Curtainwall**

**Miscellaneous Backmembers - 1/4 Scale**

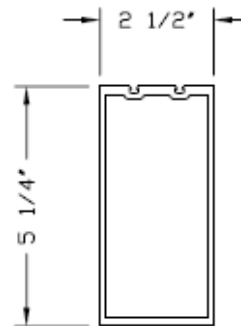
CAD DETAIL FILE NO.  
290MISC5



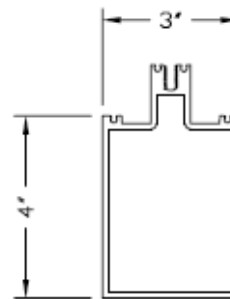
E5TB120  
FITS WITH E2411



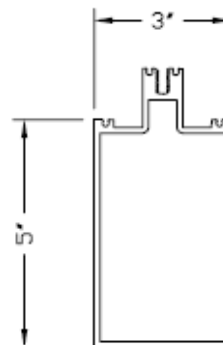
E7TB121  
FITS WITH E2411



E55TB04



E4TB95

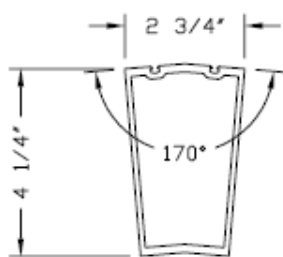


E5TB107  
FITS E4TB96 & E4TB97

# 21.38

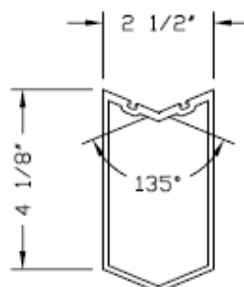
## 400 Series Curtainwall

### Miscellaneous Backmembers - 1/4 Scale

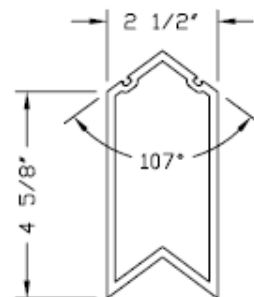


E4TB212

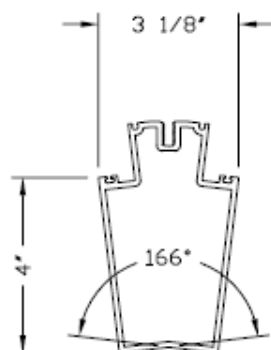
CAD DETAIL FILE NO.  
290MISC



E4TB178

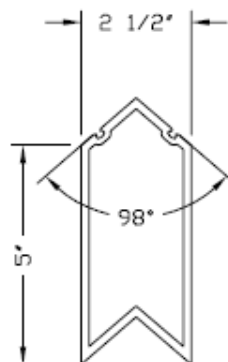


E4TB202

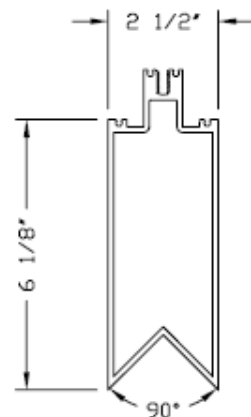


E3508

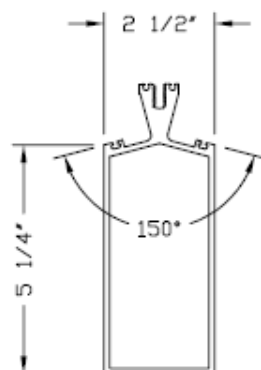
FITS WITH E3509 & E3510



E4TB203

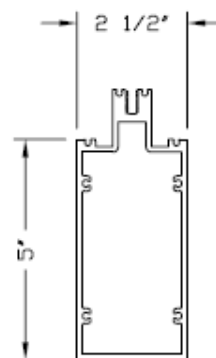


E6TB70



ESTB109

FITS WITH E4TB164



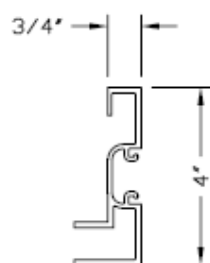
ESTB91

21.39

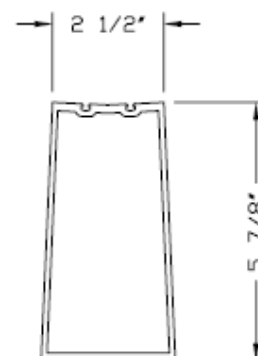
# 400 Series Curtainwall

## Miscellaneous Backmembers - 1/4 Scale

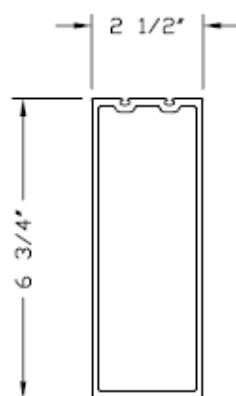
CAD DETAIL FILE NO.  
290MISC7



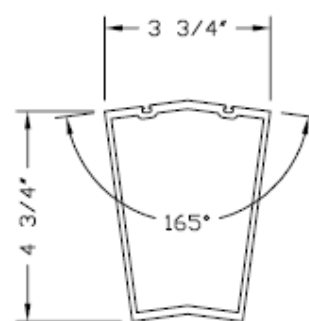
E3507



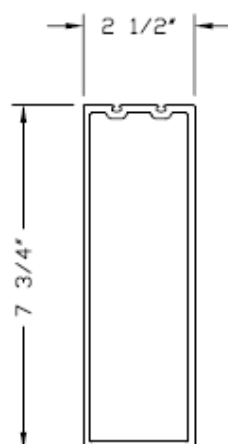
ESTB123



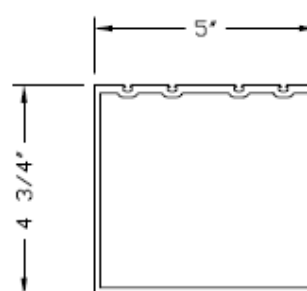
E7TB64



ESTB124



E8TB64



E4TB203